

PRODUCT INFORMATION PACKET

marathon®
Motors

Model No: 5KC49LN6386

Catalog No: H891

Hazardous Duty® Explosion Proof Motor, 0.17 HP, 1 Ph, 60 Hz, 115 V, 1200 RPM, 56 Frame, EPNV



Regal and Marathon are trademarks of Regal Rexnord Corporation or one of its affiliated companies.
©2023 Regal Rexnord Corporation, All Rights Reserved. MC017097E

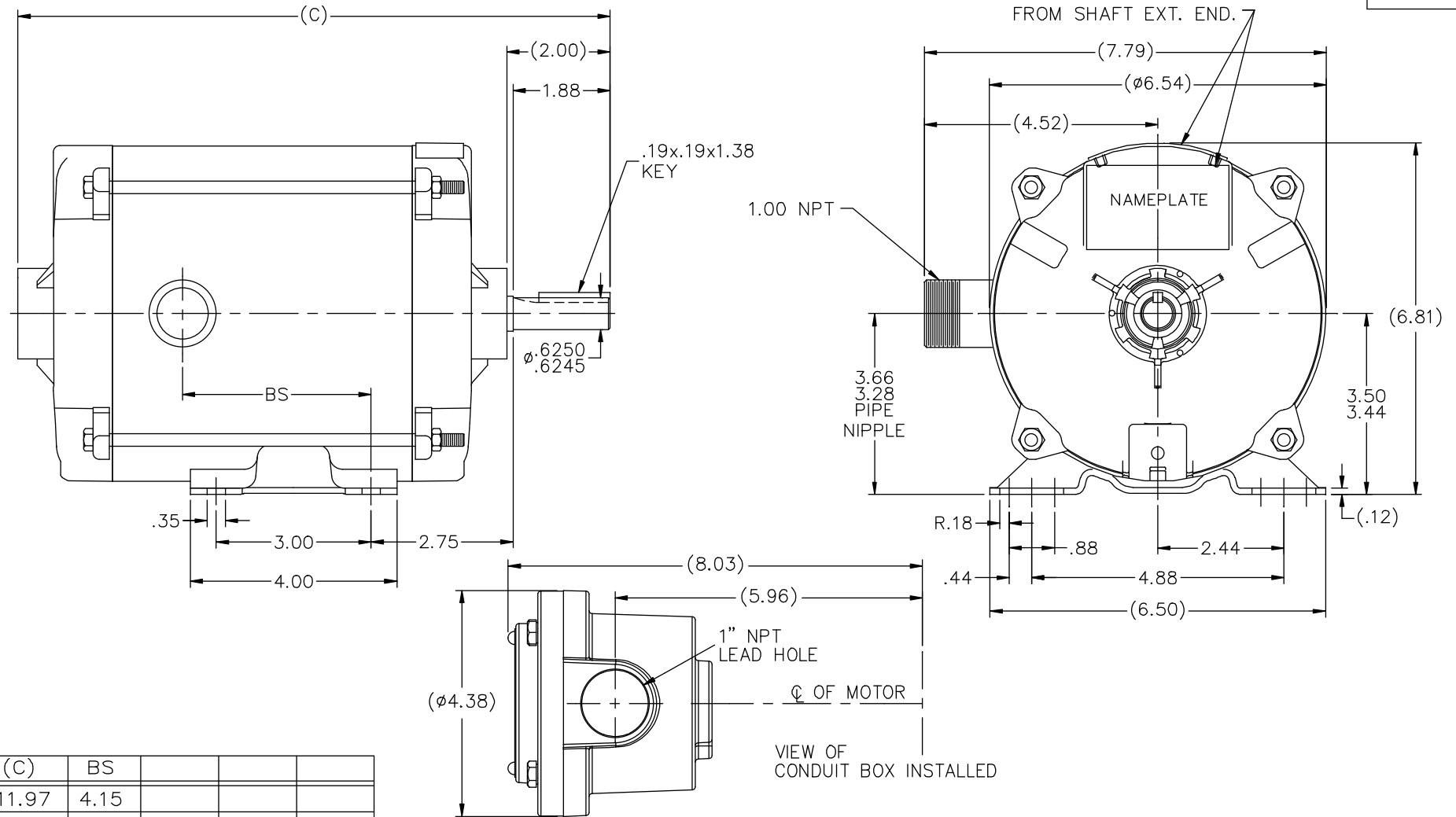
RegalRexnord

Nameplate Specifications

| | | | |
|------------------------|-----------------------------|----------------------------|--|
| Phase | 1 | Output HP | 0.17 Hp |
| Output KW | 0.13 kW | Voltage | 115 V |
| Speed | 1140 rpm | Service Factor | 1.0 |
| Frame | 56 | Enclosure | Explosion Proof Non Ventilated |
| Thermal Protection | Automatic | Efficiency | 55 % |
| Ambient Temperature | 40 °C | Frequency | 60 Hz |
| Current | 4.1 A | Power Factor | 54 |
| Duty | Continuous | Insulation Class | B |
| Design Code | NO DESIGN CODE | KVA Code | T |
| Drive End Bearing Size | 6203 | Opp Drive End Bearing Size | 6203 |
| UL | UL Listed And CSA Certified | CSA | Y |
| CE | N | IP Code | 54 |
| Number of Speeds | 1 | Hazardous Location | EXP PROOF CL I GR C&D CL II GR F&G T3B |

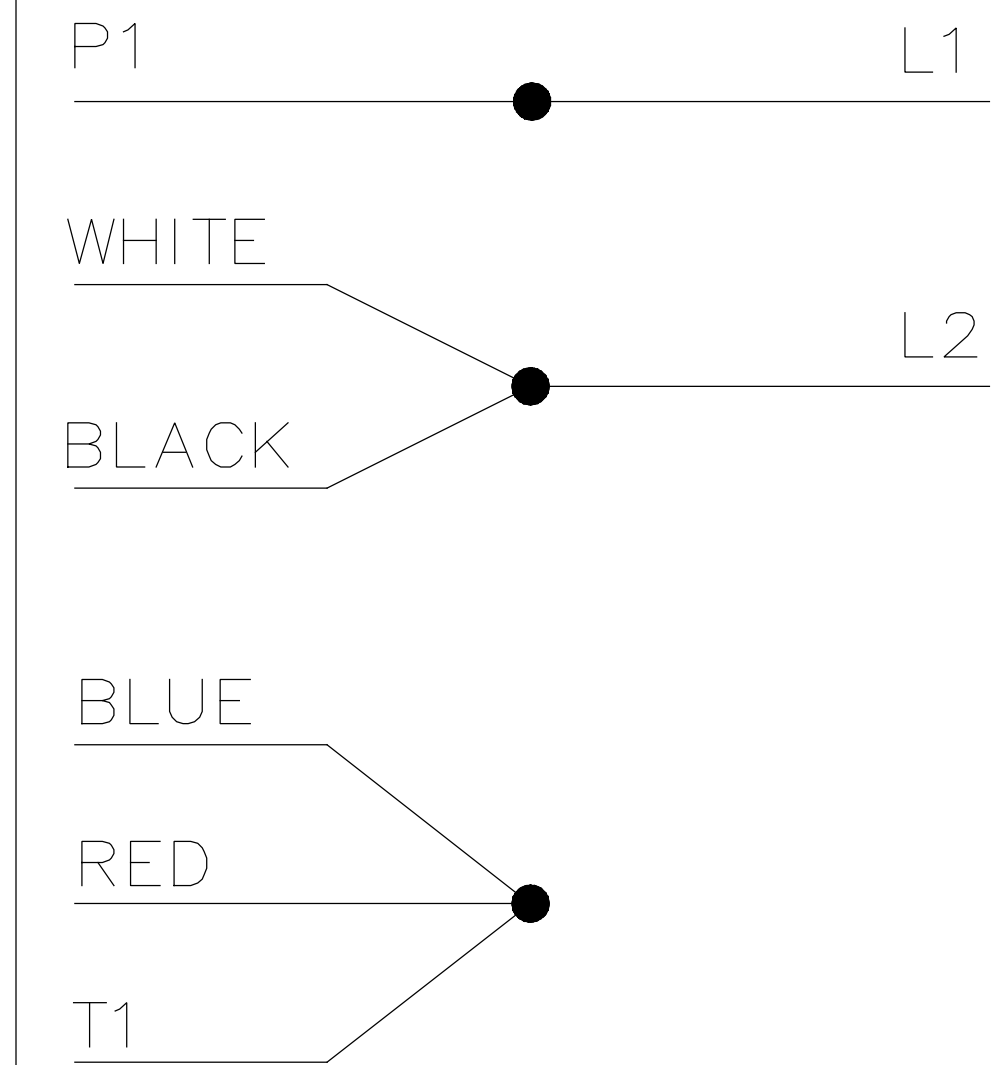
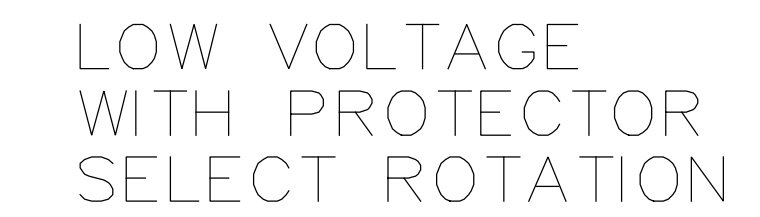
Technical Specifications

| | | | |
|-----------------------|-------------|-----------------------|----------------------------|
| Electrical Type | Split Phase | Starting Method | Across The Line |
| Poles | 6 | Rotation | Selective Counterclockwise |
| Resistance Main | 0 Ohms | Mounting | Rigid Base |
| Motor Orientation | Horizontal | Drive End Bearing | Ball |
| Opp Drive End Bearing | Ball | Frame Material | Rolled Steel |
| Shaft Type | NEMA 56 | Overall Length | 12.47 in |
| Frame Length | 6.81 in | Shaft Diameter | 0.625 in |
| Shaft Extension | 2 in | Assembly/Box Mounting | F1 ONLY |
| Connection Drawing | A-102008-72 | Outline Drawing | B-104196GE-681 |




| DASH | (C) | BS | | | |
|------|-------|------|--|--|--|
| 631 | 11.97 | 4.15 | | | |
| 681 | 12.47 | 4.65 | | | |
| 731 | 12.97 | 5.15 | | | |
| 781 | 13.47 | 5.65 | | | |
| 831 | 13.97 | 6.15 | | | |
| 881 | 14.47 | 6.65 | | | |
| 931 | 14.97 | 7.15 | | | |
| 981 | 15.47 | 7.65 | | | |

| | | | TOLERANCES UNLESS SPECIFIED | | REGAL-BELOIT CORPORATION | DRAWING NO. 104196GE | | | |
|--|--|----------------|--------------------------------|--------|--------------------------|---|-------|-------------|----------|
| | | | DEC. | INCHES | | CHK | ML | 12-06-04 | |
| 4 | COND. BOX INSTALLED VIEW UPDATED PER ECR-0044571 | UD 10/15/13 | ST | .X | ±.1 | TITLE OUTLINE 56 FRAME - EXP. PR. - TENV - 1ø & 3ø | APPD | DRN | 01-13-05 |
| 3 | REVISED C'BOX PER CN40784A | JJB 02/23/2007 | ML | .XX | ±.03 | | SCALE | 17=32 | |
| 2 | CHANGED LOGO TO REGAL BELOIT | TAT 09-07-2005 | ML | .XXX | ±.005 | | REF | | |
| 1 | SHOWED CORRECT LOGO, ADD GE TO PART NO | MJK 12/20/2004 | | .XXXX | ±.0005 | | FMF | | |
| NO. | REVISION | BY & DATE | CHK | ANG | ±7'30" | FINISH | PREV | | |
| THIS DRAWING IN DESIGN AND DETAIL IS OUR PROPERTY AND MUST NOT BE USED EXCEPT IN CONNECTION WITH OUR WORK ALL RIGHTS OF DESIGN AND INVENTION ARE RESERVED THIS IS AN ELECTRONICALLY GENERATED DOCUMENT - DO NOT SCALE THIS PRINT | | | | | RFP | CAD FILE 104196ge | SIZE | DRAWING NO. | PAGE OF |
| | | | | | DIST WP | | B | 104196GE | 4 |



FOR C.W. ROTATION
INTERCHANGE RED WITH
BLACK LEAD

| | | | | | | | | | | | | | | |
|--|-------------|----------------|-----|--------------------------------|--------|---|--------------------|--|--------------------------|-------------|-------|----|-----------|---|
| | | | | TOLERANCES UNLESS SPECIFIED | |  Regal Beloit America, Inc. | | | DRAWN | | SKM | | | |
| | | | | DEC. | INCHES | | | | CHK | | | | | |
| | | | | .X | ±.1 | | | | APPD | | SKM | | | |
| | | | | .XX | ±.02 | | | | TITLE CONNECTION DIAGRAM | | SCALE | | 5=8 | |
| | | | | .XXX | ±.005 | | | | | | REF | | 102008-64 | |
| A | NEW DRAWING | SKM 09/05/2017 | SKM | .XXXX | ±.0005 | MAT'L. | | | FMF | | | | | |
| NO. | REVISION | BY & DATE | CHK | ANG | ±7'30" | FINISH | | | PREV | | | | | |
| THIS DRAWING IN DESIGN AND DETAIL IS OUR PROPERTY AND MUST NOT BE USED EXCEPT IN CONNECTION WITH OUR WORK ALL RIGHTS OF DESIGN AND INVENTION ARE RESERVED THIS IS AN ELECTRONICALLY GENERATED DOCUMENT – DO NOT SCALE THIS PRINT | | | | RFP | | | CAD FILE 102008-72 | | SIZE | DRAWING NO. | PAGE | OF | REV. | |
| | | | | DIST WP | | | | | A | 102008-72 | | | | A |

CERTIFICATION DATA SHEET

Model#: 5KC49LN6386 D
 CONN. DIAGRAM: A-102008-64-GE
 OUTLINE: B-104196GE-681

WINDING#: ZS607 NONE 1
 ASSEMBLY: F1 ONLY

TYPICAL MOTOR PERFORMANCE DATA

| HP | KW | SYNC. RPM | F.L. RPM | FRAME | ENCLOSURE | KVA CODE | DESIGN |
|-----|------|-----------|----------|-------|-----------|----------|----------------|
| 1/6 | 0.13 | 1200 | 1140 | 56 | EPNV | T | NO DESIGN CODE |

| PH | Hz | VOLTS | FL AMPS | START TYPE | DUTY | INSL | S.F | AMB°C | ELEVATION |
|----|----|-------|---------|-----------------|------------|------|-----|-------|-----------|
| 1 | 60 | 115 | 3.8 | ACROSS THE LINE | CONTINUOUS | B3 | 1.0 | 40 | 3300 |

| FULL LOAD EFF: 55 | 3/4 LOAD EFF: 0 | 1/2 LOAD EFF: 0 | GTD. EFF | ELEC. TYPE | NO LOAD AMPS |
|-------------------|-----------------|-----------------|----------|-------------|--------------|
| FULL LOAD PF: 54 | 3/4 LOAD PF: 0 | 1/2 LOAD PF: 0 | 0 | SPLIT PHASE | 3.1 |

| F.L. TORQUE | LOCKED ROTOR AMPS | L.R. TORQUE | B.D. TORQUE | F.L. RISE°C |
|-------------|-------------------|-------------|-------------|-------------|
| 12.2 LB-FT | 29 | 21 LB-FT 0 | 28 LB-FT 0 | - |

| SOUND PRESSURE @ 3 FT. | SOUND POWER | ROTOR WK^2 | MAX. WK^2 | SAFE STALL TIME | STARTS /HOUR | APPROX. MOTOR WGT |
|------------------------|-------------|------------|-----------|-----------------|--------------|-------------------|
| 0 dBA | 10 dBA | 0 LB-FT^2 | 0 LB-FT^2 | 10 SEC. | 0 | 0 LBS. |

*** SUPPLEMENTAL INFORMATION ***

| DE BRACKET TYPE | ODE BRACKET TYPE | MOUNT TYPE | ORIENTATION | SEVERE DUTY | HAZARDOUS LOCATION | DRIP COVER | SCREENS | PAINT |
|-----------------|------------------|------------|-------------|-------------|--|------------|---------|--------------------|
| STANDARD | STANDARD | RIGID | HORIZONTAL | FALSE | EXP PROOF CL I GR C&D CL II GR F&G T3B | FALSE | NONE | GRAY - GE (POWDER) |

| BEARINGS | | GREASE | SHAFT TYPE | SPECIAL DE | SPECIAL ODE | SHAFT MATERIAL | FRAME MATERIAL |
|----------|------|------------|------------|------------|-------------|--------------------------|----------------|
| DE | OPE | | | | | | |
| BALL | BALL | POLYREX EM | T | NONE | NONE | 1144 STRESSPROOF (C-223) | ROLLED STEEL |
| 6203 | 6203 | | | | | | |

| THERMO-PROTECTORS | | | | THERMISTORS | CONTROL | SPACE /n HEATERS |
|-------------------|------------|----------|----------|-------------|---------|------------------|
| THERMOSTATS | PROTECTORS | WDG RTDs | BRG RTDs | | | |
| NONE | AUTOMATIC | NONE | NONE | NONE | FALSE | NONE VOLTS |

If Inverter equals NONE, contact factory for further information

| | | | | | | |
|---------------------------------|---------------------------|------------|--|--------|--|---------|
| * N O T E S * | INVERTER TORQUE: NONE | | | | | |
| | INV. HP SPEED RANGE: NONE | | | | | |
| | ENCODER: NONE | | | | | |
| | NONE NONE | | | | | |
| | NONE NONE PPR | | | | | |
| | BRAKE: NONE NONE | | | | | |
| | NONE P/N NONE | | | | | |
| | NONE NONE | | | | | |
| | | NONE FT-LB | | NONE V | | NONE Hz |

DATE: 06/28/2017 02:07:12 AM

FORM 3531 REV.3 02/07/99

** Subject to change without notice.



MARATHON ELECTRIC CORPORATION

TYPICAL PERFORMANCE CURVE for AC MOTOR

Customer

Curve at

115

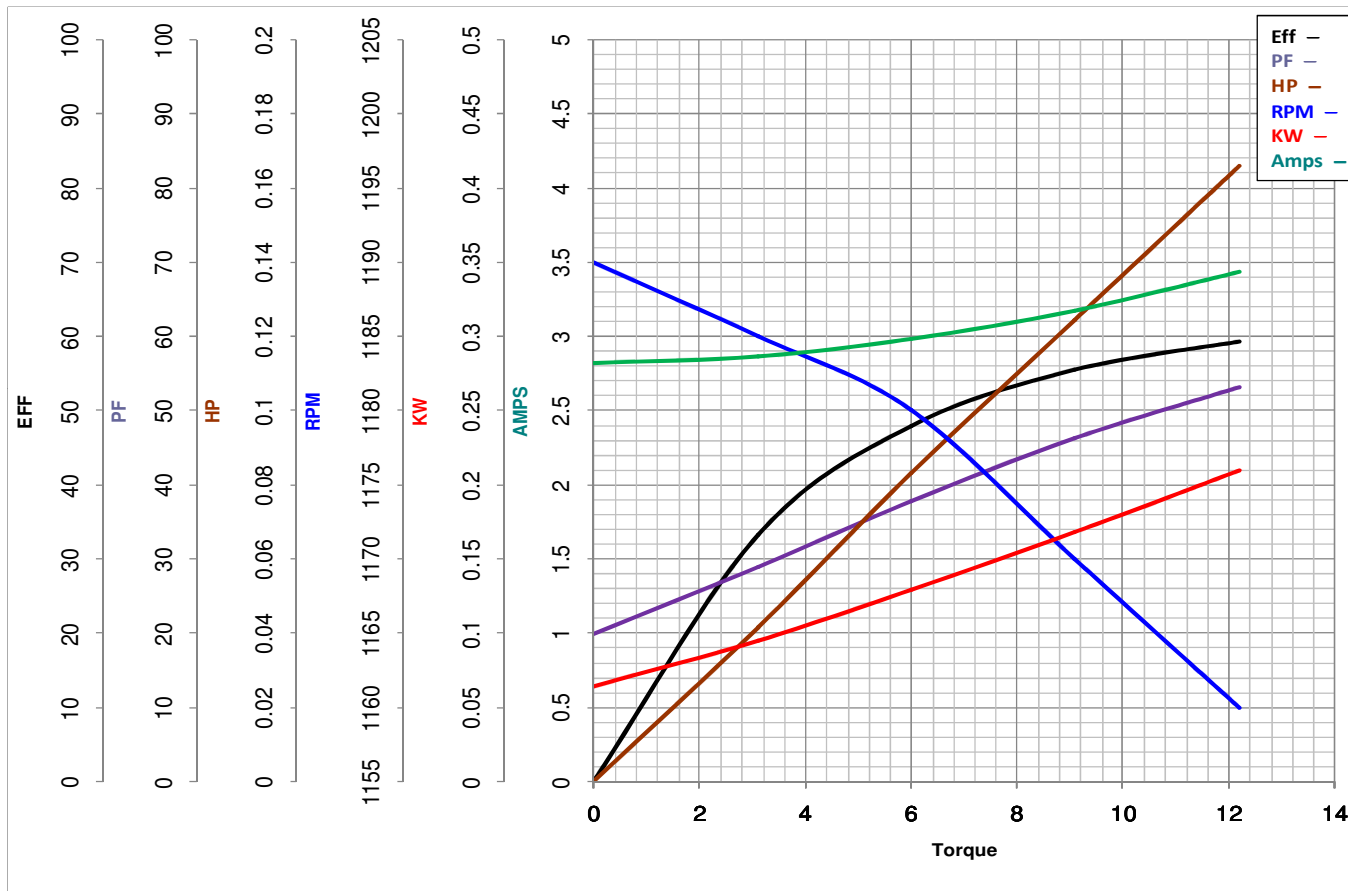
Volts

HP 0.166PHASE 1Model No 5KC49LN638660

HZ

VOLTS 1150.166

HP

Catalog No H891HZ 60RPM 1140

Torque in Oz.Ft

FL TORQUE 12.2 Oz.FtBD TORQUE 28.0 Oz.FtLR TORQUE 21 Oz.FtFL AMPS 4.1PU TORQUE 20.4 Oz.FtLR AMPS 29

WINDING ZS607-1

Date 2/4/2019