

PRODUCT INFORMATION PACKET

marathon®
Motors

Model No: 056C17D15557
Catalog No: 056C17D15557
1/2,1725,DP,56,1/60/115/230

Regal and Marathon are trademarks of Regal Rexnord Corporation or one of its affiliated companies.
©2023 Regal Rexnord Corporation, All Rights Reserved. MC017097E

The logo for Regal Rexnord, featuring a stylized 'R' icon followed by the text 'RegalRexnord'.

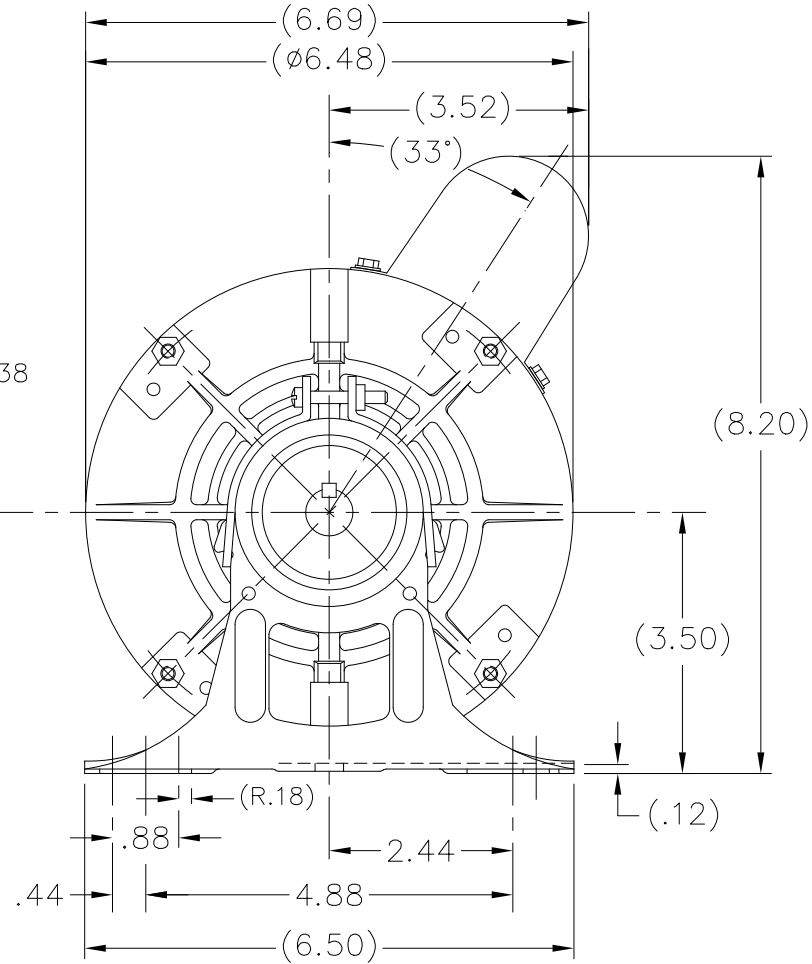
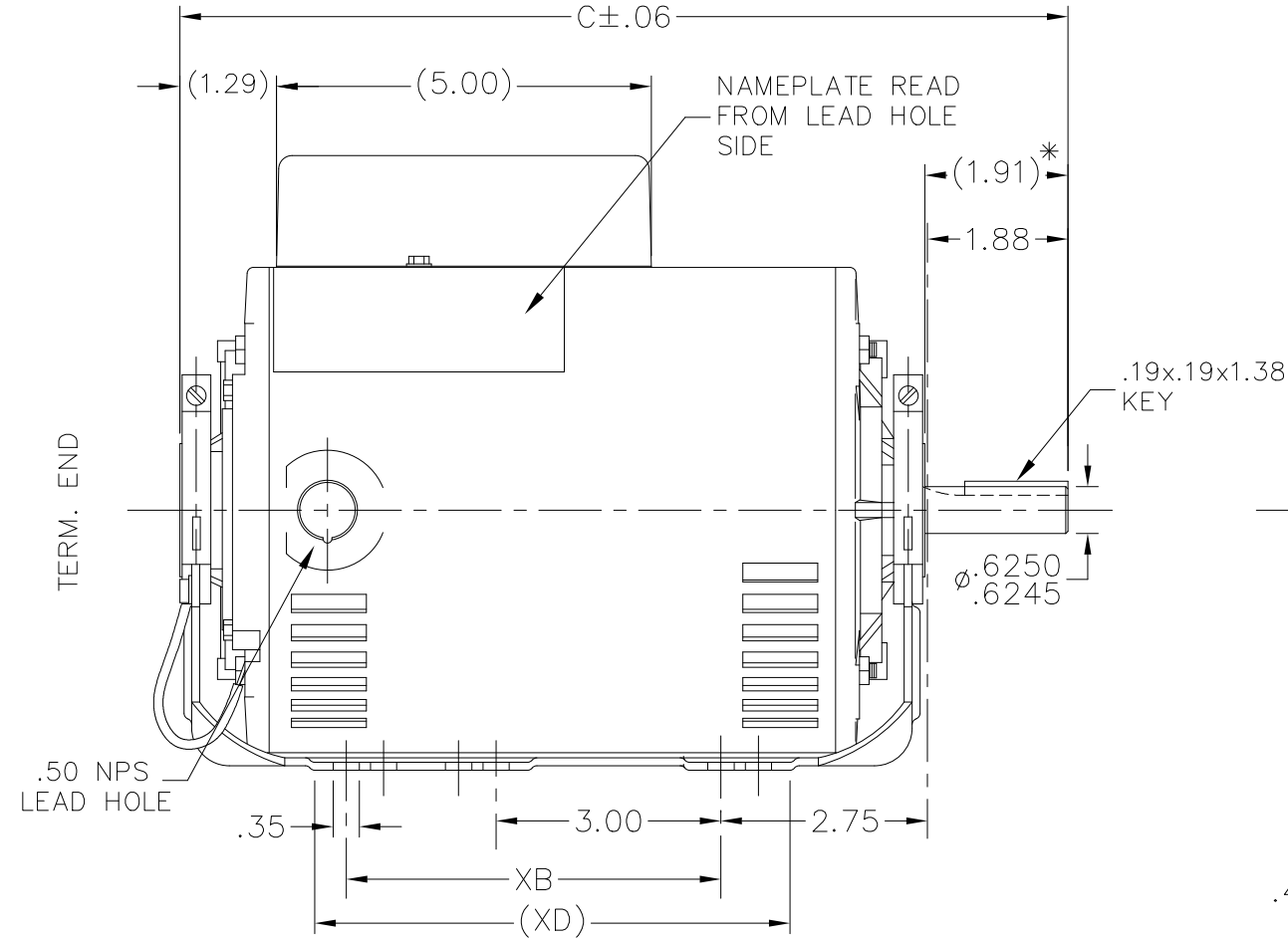
Nameplate Specifications

Output HP	0.50 Hp	Output KW	0.37 kW
Frequency	60 Hz	Voltage	115/230 V
Current	10.8/5.4 A	Speed	1725 rpm
Service Factor	1.5	Phase	1
Efficiency	62 %	Power Factor	49
Duty	Continuous	Insulation Class	B
Design Code	N	KVA Code	P
Frame	56	Enclosure	Drip Proof
Thermal Protection	Automatic	Ambient Temperature	40 °C
Drive End Bearing Size	6203	Opp Drive End Bearing Size	6203
UL	Recognized	CSA	Y
CE	Y	IP Code	22
Number of Speeds	1		

Technical Specifications

Electrical Type	Capacitor Start Induction Run	Starting Method	Across The Line
Poles	4	Rotation	Selective Counterclockwise
Resistance Main	0 Ohms	Mounting	Resilient Base
Motor Orientation	Horizontal	Drive End Bearing	Ball
Opp Drive End Bearing	Ball	Frame Material	Rolled Steel
Shaft Type	T	Assembly/Box Mounting	F1 ONLY
Connection Drawing	A-102005-2	Outline Drawing	A-100121-656


This is an uncontrolled document once printed or downloaded and is subject to change without notice. Date Created:03/11/2023

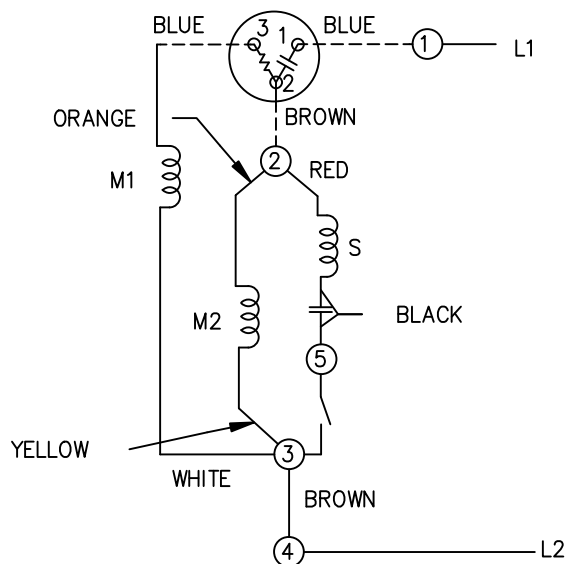


* DIMENSION IS FROM RESILIENT RING END CAP TO END OF SHAFT

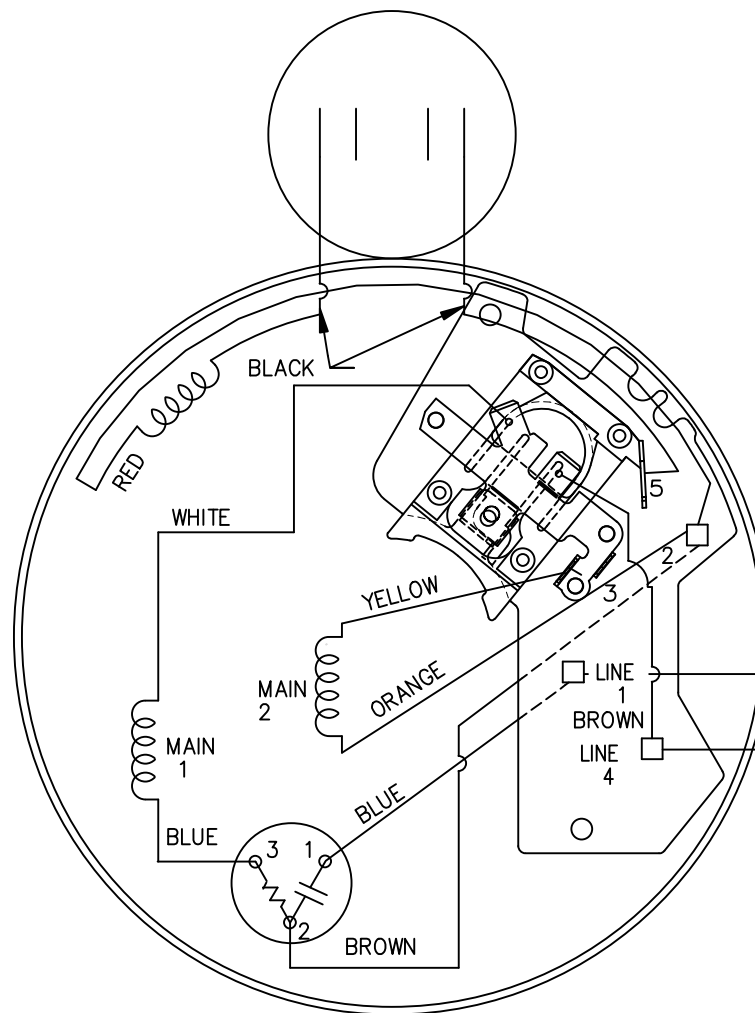
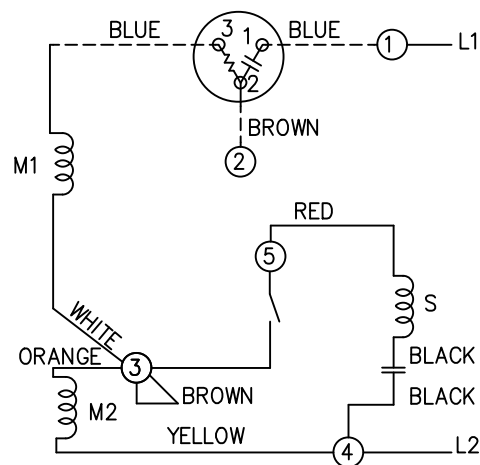
- NOTES:
1. MOTOR MUST BE ROTATED TO PROVIDE SOCKET CLEARANCE FOR GROUND SCREW, MAXIMUM (20 DEGREES).

DASH	FRAME	C	XB	XD
656	56-	10.85	0	5.50
706	56-	11.35	0	6.00
756	"-	11.85	5.00	6.50
856	"-	12.85	5.00	6.50

				TOLERANCES UNLESS SPECIFIED			DRAWN PGK 12-16-1997			
9	UPDATED NOTE FROM 10° TO 20° PER ECR-0224142	RAJ 2/28/23	NS	DEC.	INCHES		CHK ML 01-16-1997			
8	ADDED DASH 6 IN THE REFERENCE TABLE	SVL 12/14/2005	AT	.X	±.1	TITLE OUTLINE 56FR. - 1ø-BB-DR.PR.-RESIL. MT. MAT'L. FINISH	APPD GK 01-16-1997			
7	REDRAWN IN AUTOCAD	TAT 09-01-2004	ML	.XX	±.03		SCALE 3=8			
6	ADDED NOTE CN 24378	PGK 06-09-1997		.XXX	±.005		REF			
5	REDRAWN ON CADD	PGK 01-16-1997		.XXXX	±.0005		FMF			
NO.	REVISION	BY & DATE	CHK	ANG	±7°30"		PREV			
THIS DRAWING IN DESIGN AND DETAIL IS OUR PROPERTY AND MUST NOT BE USED EXCEPT IN CONNECTION WITH OUR WORK ALL RIGHTS OF DESIGN AND INVENTION ARE RESERVED THIS IS AN ELECTRONICALLY GENERATED DOCUMENT - DO NOT SCALE THIS PRINT			RFP			CAD FILE 100121	SIZE	DRAWING NO.	PAGE 1 OF 1	REV
			DIST WP			3 of 5			A	100121



HIGH VOLTAGE – C.C.W.



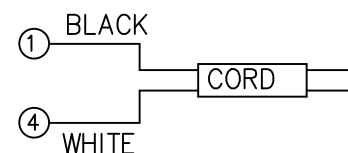
DUAL VOLTAGE CAPACITOR START
OVERLOAD SELECT ROT.

LOW VOLTAGE C.C.W. ROTATION
SHOWN. TO REVERSE INTERCHANGE
RED WITH BLACK LEAD ON
TERMS 2 AND 5.

FOR HIGH VOLTAGE C.C.W. ROT.
FIRST REMOVE BROWN JUMPER
FROM TERM. 4 AND ATTACH
TO TERM.3 AND CONNECT YELLOW
LEAD TO TERM.4 AND ORANGE
LEAD TO TERM 3. CONNECT
RED LEAD TO TERM #5 AND
BLACK LEAD FROM TERM #5
TO TERM #4. TO REVERSE
INTERCHANGE RED WITH BLACK
LEAD ON TERMS 5 AND 4.

4A — L2

5A — L1

CONNECTION FOR
WIRING HARNESS

CONNECTION FOR CORD

NO.	REVISION	BY & DATE	CHK	ANG	TOLERANCES UNLESS SPECIFIED		REGAL-BELOIT <i>Motor Technologies Group</i>	TITLE CONNECTION DIAGRAM	MAT'L.	FINISH	DRAWN PGK 06-20-1996			
					DEC.	INCHES					CHK	MRB	07-18-1996	
11	ADD NOTE ISAAC 10-3333	TF 9/27/2010										APPD	GK	07-18-1996
10	UPDATED WIRING HARNESS CONNECTIONS CN 32007	DRS 01-14-2003	ML	.X	±.1							SCALE	5=8	
9	ADDED CONNECTION FOR WIRING HARNESS	KJC 12-17-2002	SAS	.XX	±.03							REF		
8	RE-ISSUE FOR CLARITY	PGK 08-21-1996		.XXX	±.005									
7	REDRAWN ON CADD, NO CHANGES	PGK 07-18-1996		.XXXX	±.0005									
											PREV			
THIS DRAWING IN DESIGN AND DETAIL IS OUR PROPERTY AND MUST NOT BE USED EXCEPT IN CONNECTION WITH OUR WORK ALL RIGHTS OF DESIGN AND INVENTION ARE RESERVED THIS IS AN ELECTRONICALLY GENERATED DOCUMENT – DO NOT SCALE THIS PRINT											RFP			
											DIST			
											CAD FILE 102005_2			
											SIZE	DRAWING NO.	PAGE	OF
											A	102005-2		REV.
											11			

EC Declaration of Conformity

The undersigned representing
the manufacturer:

Regal Beloit America
100 East Randolph St.
Wausau, WI 54401

and the authorized representative
established within the Community:

Marathon Electric UK
6F Thistleton Road Ind. Estate
Market Overton
Oakham, Rutland LE15 7PP UK

are committed to providing customers with products that comply with applicable regulations and international protocols to which they are subject, including the requirements of the European Parliament Directive on the Harmonization of the laws relating to electrical equipment designed for use within certain voltage limits (2014/35/EU).

Regal Beloit America declares that the following product(s), to which this declaration relates, are in conformity with the relevant sections of the EC standards listed below.

This statement supersedes any statements previously issued pertaining to the product(s) listed below and is subject to change without notice.

Model No : 056C17D15557

(Model No. may contain prefix and/or suffix characters)

Catalog No : 056C17D15557

Rework No : N/A

Directives :

Low Voltage Directive 2014/35/EU

Harmonized Standards Used :

EN 60034-1: 2010 (IEC 60034-1: 2010)

EN 60034-5: 2001/A1:2007 (IEC 60034-5: 2000/A1:2006)

Authorized Representative:



Michael A. Logsdon
Vice President, Technology

Authorized Representative in the Community:



Julian Clark
Marketing Engineer

Created on 09/01/2022

CE 22